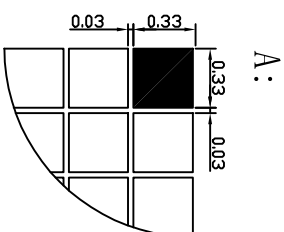
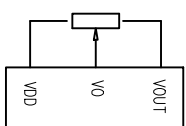
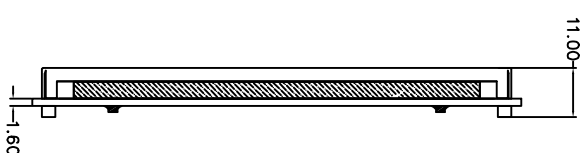
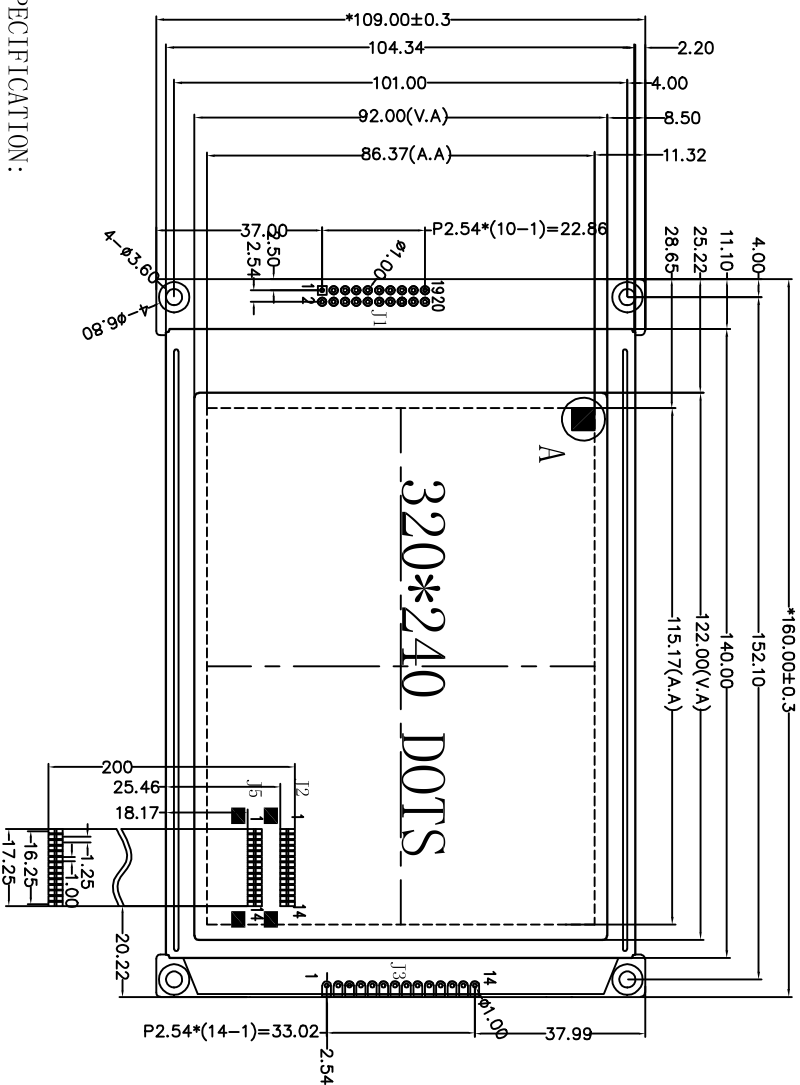


Customer approval :



SPECIFICATION:

- 1). Driving: Duty:1/240, Bias:1/17, VOUT:-21.5V, V0:-18.5V, VDD:5V
- 2). VIEWING DIRECTION: 6 0° CLOCK
- 3). Display mode: STN/Negative/Transmissive/Blue or Fstrn
- 4). Operating temp.: -20° C~+70° C
Storage temp.: -30° C~+80° C
- 5). Control IC: RA8835AP3N
- 6). BACKLIGHT Type: White 5V 160ma
- 7). DIMENSIONS WITH MARK "*" ARE IMPORTANT WITH MARK "()" ARE REFERENCED
- 8). All the raw materials are RoHS compliant

接口选择使用, FPC选择使用

J1	GND	1	2	3	4	5	6	7	8	9	10	11	12	13	14	15	16	17	18	19	20
J2	DO	D1	D2	D3	DISP	FLM	M	LP	CP	VCC	GND	VOUT	DO	D1	D2	DISP	NC				
J3	DO	D1	D2	D3	DISP	FLM	M	LP	CP	VCC	GND	VOUT	DO	D1	D2	DISP	NC				
J5	FLM	LP	CP	M	VO	VCC	GND	VOUT	DO	D1	D2	DISP	NC								

REV	REVISION RECORD	DATE
A0	First issue	03/15



深圳市三元晶科技有限公司
ShenZhen TCC LCD Hi-Tech Co., Ltd.

MODEL NO.	SYM320240B8V40	GENERAL TOL:	± 0.3
APPROVED BY	CHECKED BY	DRAWING BY	PAGE: 1 OF 1
		LAN	UNIT: mm
			PROJECTION